

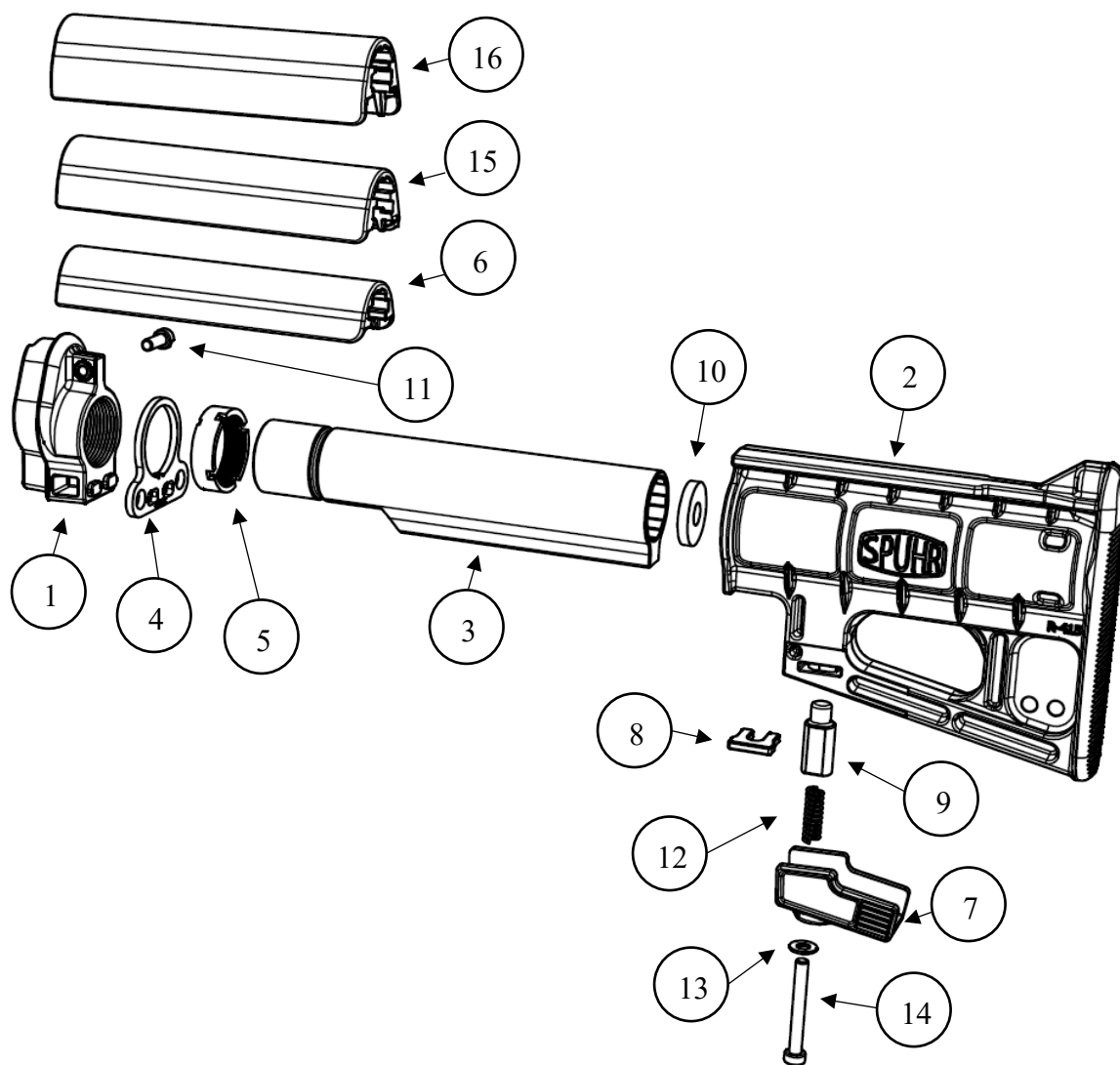


## MANUAL R-410 G3 STOCK ASSEMBLY

Upon delivery the stock is assembled into one piece. Do not disassemble the stock beyond what is described below.

**NOTE:** Do not attempt these instructions without first ensuring that the rifle is unloaded and on safe!

1. Remove the stock assembly from the rifle. Remove the original stock from the back plate by removing the recoil pad and unscrewing and setting aside the *Buffer screw, self-locking* (HK part# 1013-041.17), *Spring washer* (HK part# A 8 DIN 127), and the two *Countersunk screw, self-locking with Toothed lock washers* (HK part# 1013-041.31 and V 5,3 DIN6798). Remove the *Buffer* from the back plate and set it aside.
2. Separate the *R-410 G3 Stock Assembly* by pulling down on the front of the *Buttstock lever* (#7) while pulling the *Buttstock* (#2) off the *Buffer tube* (#3).
3. Fit the *G3 Stock Adapter* assembly (consisting of the *G3 Stock Adapter*, *Spuhr Buffer Tube*, *Rear Sling Plate*, and *Castle Nut* as a complete unit) to the *Back plate*. Reposition the *Buffer* into the *Back plate* and secure it loosely using the two *Countersunk screw, self-locking* and *Toothed lock washers* (HK part# 1013-041.31 and V 5,3 DIN6798) from step 1.
4. For Heavy/Long Buffer, secure the G3 Stock Adapter Assembly to the Buffer by sliding the Buffer Tube Locking Washer (#10) into the Buffer Tube followed by the *Buffer screw, self-locking* (HK part# 1013-041.17) with *Spring washer* (HK part# A 8 DIN 127). For rifles with Standard/Short Buffer, use the G3 Buffer Collet (not pictured) instead of the Buffer Tube Locking Washer. Use the Buffer Tube Locking Washer if the Buffer extends to the end of the internal splines of the Buffer Tube, otherwise use the G3 Buffer Collet.
5. Tighten the two *Countersunk screw, self-locking* and *Toothed lock washers* (HK part# 1013-041.31 and V 5,3 DIN6798). Reattach the *Buttstock* to the *Buffer Tube* in the opposite order of step 2 above while making sure the comb of the *Buttstock* slides into the track of the *Cheek Piece* (if the *Cheek Piece* is already attached to the *G3 Stock Adapter*).
6. To adjust the length-of-pull push or pull down on the rear of the *Buttstock Lever* until the *Locking Plunger* is freed from the *Buffer Tube*. Release the lever when in desired position and give the *Buttstock* a slight pull to ensure the *Locking Plunger* is securely locked into the *Buffer Tube*.
7. To change *Cheek Piece*, unscrew the M5x16 screw on the right side of the *Cheek Piece* and then pull the *Cheek Piece* to the rear until it can be lifted off the comb of the *Buttstock*. To attach an optional replacement *Cheek Piece* Riser follow these steps in the reverse order.



PARTS LIST			
ITEM	QTY	PART NUMBER	DESCRIPTION
1	1	R-411	G3 Stock Adapter
2	1	R-415	Buttstock
3	1	R-412	Spuhr Buffer tube com.
4	1	R-413	Rear Slingplate
5	1	R-414	Castle Nut
6	1	R-416	Cheekpiece
7	1	R-418	Buttstock lever
8	1	R-420	Buttstock spring washer
9	1	R-419	Locking plunger
10	1	R-421	Buffer tube locking washer
11	1	S-1014	M5X16 slotted screw
12	1	S-2106	Stainless steel spring 5x7x25
13	1	A-0180	5,5 mm SS washer
14	1	S-1013	Screw M5x40 12.9
15	1	R-417	Cheekpiece +
16	1	R-422	Cheekpiece ++