



GLSM PRESENTATION

GRENADE LAUNCHERS SIGHT MOUNTS

Though mostly famous for our **Ideal Scope Mount System** Spuhr i Dalby AB was founded around a single product – the **GS-1050 NVG Carry System**. Since then we have continued to work with other projects relating to various optic mounts, such as the SM-100 Dual Position Accessory Mount, the SM-101QD Ballistic Adjustable Mount, and others. We have also worked with various upgrade kits for firearms.

Our **GR-series of Grenade Launcher Sight Mounts** was designed to increase the first hit capability of 40mm launchers – and in combination with NVGs and a Red Dot Sight with night vision settings – the GR-series turns the 40mm launcher into a 24-hour capable system.

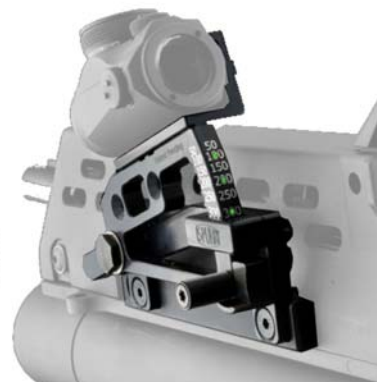
As there are many different launchers and munitions on the market, the ballistic bow – the heart of the GLSM – is manufactured to match the exterior ballistics of the customer specified launcher and munition.

Thanks to its ease of use and high accuracy, the GR-series effectively **shortens the length of training needed** to become proficient with the 40mm system, while at the same time **providing cost savings** as fewer grenades will be needed to complete training.

MOUNTS

GR-1000 HK GLM Mount, Tritium

The **GR-1000** is our original Grenade Launcher Sight Mount, designed to attach to the side of an HK GLM. Designed to be used with HE low velocity munitions, the GR-1000 has a ballistic bow with range settings from 50 to 350 meters. The rear of the ballistic bow has tritium inserts for 100, 200, and 300 meters. (GR-1010 Luminova version available).



GR-1001 Mount for Side Picatinny, Tritium

NSN 1240-22-625-2185 (Tan color)

NSN 1005-22-624-9431 (Tan color w/ Aimpoint T1)

NSN 1240-15-206-0287 (Luminova)

The **GR-1001** is designed to attach to be mounted on the side of a Picatinny forend/rail. Designed to be used with low velocity HE munitions, the GR-1001 has a ballistic bow with range settings from 50 to 350 meters. The rear of the ballistic bow has tritium inserts for 100, 200, and 300 meters. (GR-1011 Luminova version available).



GR-1002 Double Mount for Top Picatinny, Tritium

NSN 1005-22-613-9492 (Tan color w/ Aimpoint T1)

The **GR-1002** is designed to combine the mount for the primary red dot sight with the GLSM. The GR-1002 is therefore designed to attach to a Picatinny top rail. Designed to be used with low velocity HE munitions, the GR-1001 has a ballistic bow with range settings from 50 to 350 meters. The rear of the ballistic bow has tritium inserts for 100, 200, and 300 meters. (GR-1012 Luminova version available).



GR-1003 Quadrant Sight 40 mm Mount

The **GR-1003**, which is based on the GR-1001, was developed for the Swedish Armed Forces, and is designed to attach to be mounted on the side of a Picatinny rail. The GR-1003 features an updated geometry of the ballistic bow, which allows for the use of larger accessories on the side mounted Picatinny interface. Designed to be used with low velocity HE munitions, the GR-1001 has a ballistic bow with range settings from 50 to 350 meters. The rear of the ballistic bow has tritium inserts for 100, 200, and 300 meters.



ACCESSORIES

A-0002 Picatinny Rail 8x55 mm

NSN 1005-22-627-7510

The A-0002 Picatinny Rail allows any Red Dot Sight with a MIL-STD-1913 or STANAG 4694 clamp to be used on the GLSM. The A-0002 is also a standard accessory with our various forend solutions.



A-0011 Docter/Burris Interface

NSN 1240-22-623-8872

NSN 1240-22-625-6640 (Tan color)

The A-0011 DR/Burris Interface allows a Docter, Burris FastFire, or Vortex Venom red dot sight to be used on the GLSM. The A-0011 is also a standard accessory with our Ideal Scope Mount System.



GR-1101B Aimpoint Interface

NSN 1240-22-625-2211 (Tan color)

The GR-1101B is an interface with Spuhr Interfaces, designed to hold an Aimpoint Micro to the top of a GLSM in a slight offset, as to position the Aimpoint centered above the GLSM.



GR-1101C Aimpoint Angled Interface

NSN 1240-22-625-2252 (Tan color)

The GR-1101C is bracket interface with Spuhr Interfaces, designed to hold an Aimpoint Micro to the top of a GLSM and allowing the user to configure the mount to be attached to either the left or the right side of the weapon. When configured for left-side mounting the GR-1101C will hold the Aimpoint at a 90-degree angle so that the illumination can be easily accessed on top. When the GLSM is mounted to the right side of the firearm the GR-1101C will allow the Aimpoint to be oriented in a normal position with the illumination on the right.



R-1610 M203 Handguard

The **R-1610 M203 Handguard** was developed for the Swedish Armed Forces to provide a more secure mounting platform for the GR-1003 on a M203 GLM mounted on the Swedish AK 5C carbine (FN FNC clone). The two steel side plates feature Spuhr Interfaces and allow the user to add mission specific accessories.



Export Restrictions

In accordance with **Swedish Law (1992:1300) about Military Equipment** and **Ordinance (1992:1303) about Military Equipment** export of the GLSM requires an Export Permit issued by the *Inspectorate of Strategic Products* (ISP).

Furthermore, prior to providing any technical information or quotations, the end-user must be pre-approved by the ISP to receive any such materials.

Spuhr i Dalby AB
Terminalvägen 19
SE-246 42 Löddeköpinge
Sweden

+46-46-712012
info@spuhr.com
www.spuhr.com

v2017:02